



**BEFORE FLYING, PLEASE  
READ & UNDERSTAND  
THESE INSTRUCTIONS!**  
and go to [www.knowbeforeyoufly.org](http://www.knowbeforeyoufly.org)



# VISTA™ FPV

**Radio Controlled  
Quadcopter**

Vista FPV Quadcopter



Camera  
with  
Memory  
Card

Spare Blades  
(2 black, 2 color)



Camera Wire



USB Charger



Flight Battery



Controller

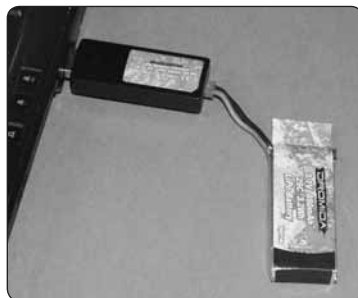


AAA Batteries (4)



**TO PREVENT MOTOR DAMAGE ALWAYS BE SURE THE THROTTLE IS OFF WHEN THE BLADES ARE OBSTRUCTED OR CONTROL IS LOST.**

## CHARGING



Optional AC  
Adapter  
(DIDP1125  
not included)

Plug the charger into a USB port or AC adapter (not included) as shown and connect the battery. The charger LED is steady on when charging. The LED flashes when charge is complete.

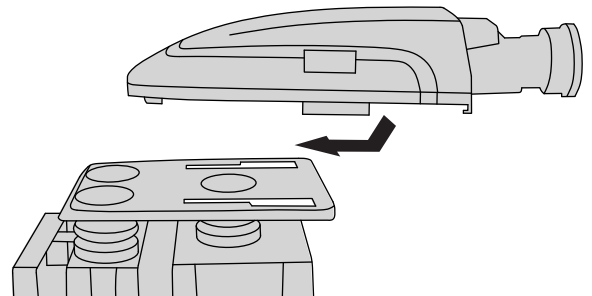
- **NEVER** leave the battery unattended while charging.
- **DO NOT** allow the USB port to power down while the charger is connected to the battery.
- **ALWAYS** unplug the charger from the USB port and the battery when charging is complete.
- **NEVER** charge a puffed or damaged battery.

## INSTALL BATTERIES IN THE CONTROLLER

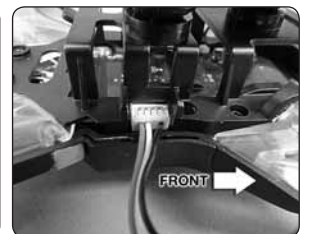


Remove the screw and slide the cover down to insert the included 4 AAA batteries.

## INSTALL THE CAMERA



1. Carefully slide the camera onto the camera mount until you feel it click into place.



2. Connect the included camera wire to the camera and to the quadcopter. The plugs can only be connected one way. Look closely at the photos to see the orientation of wire colors.

## LINKING



Power Switch

1. Turn on the controller with the throttle at its lowest position.
2. Connect the battery to the Vista and place it on a level surface. The LED on the quad will flash rapidly when the quad is linked to the controller and ready to fly.

**ALWAYS unplug the battery after flying! Damage to the battery may result if left connected.**



## QUADCOPTER SENSOR CALIBRATION

If the quadcopter is constantly drifting in the same direction or any time a new flight control board has been installed, the sensors on the Vista should be calibrated.

1. **Calibrate the sensors before the first flight.** Center all the trim adjustments. To center the trim settings, hold down one side of the trim button until you hear a long beep. If the controller stops beeping, release the trim button and hold down the other side.
2. Place your Vista on a level surface and link the quadcopter with the controller.



3. Press and hold the right stick in its lower right corner.
4. Move the left stick down and to the right. When the arm LEDs start to flash, release both sticks. The LEDs will stop flashing when the calibration is complete.

## FLYING



## FLYING BASICS

1. Take off by “slowly” advancing the left stick until the quad takes off.
2. Control altitude using the left stick.
3. Use the right stick to move left, right, forward, or backward.
4. Use the left stick (left/right) to rotate or spin left or right.
5. Always use small movements until you learn how the model behaves.



**TO PREVENT MOTOR DAMAGE ALWAYS BE SURE THE THROTTLE IS OFF WHEN THE BLADES ARE OBSTRUCTED OR CONTROL IS LOST.**

## DUAL RATES

Control sensitivity can be changed by pushing down on the right stick on the controller. The default is low rate when the flight mode LED is blue. The controller will make a double beep and the flight mode LED will change to orange indicating high rate. This mode should be used when flying outdoors or when more agility is desired. Pushing down on the right stick again will return the controller to low rate indicated by a single beep and the flight mode LED changing back to blue. This mode should be used when flying indoors, learning to fly, or smoother video is desired.



The low rate sensitivity will always be 25% less than the high rate. The overall controls can be adjusted by:

1. Holding down the right stick until the controller beeps once.
2. Continuing to hold down the right stick and advancing the throttle to the desired setting.
3. Releasing the right stick and returning the throttle to 0%.

The default setting is when the throttle stick is at 50% (midstick).

## FLIGHT MODES

The Vista has advanced stabilization which automatically levels the quad when the right stick is centered and limits how far the Vista can tilt.

Press the Flight Mode button to toggle this off or on.



**Easy Mode** – Control rates are at a low setting. This is the default mode for the controller and should be used when indoors or if the pilot is just learning to fly.

**Normal Mode** – The control rates are high. This mode should be selected when flying outdoors or when more agility is desired.

Mode	LED	Stab.	Sensitivity
Easy	Steady blue	ON	Low
Normal	Steady orange	ON	High
Advanced	Flashing blue	OFF	Low
Expert	Flashing orange	OFF	High

**Advanced Mode** – Advanced stabilization is off and the control rates are low. Your Vista will be more agile because there are no limits on how far it can turn in any direction.

**Expert Mode** – Advanced stabilization is off and the control rates are high.

## FLIPS

Your Vista can perform a flip when the flip button is pressed followed by moving the right stick in the desired flip direction. This stunt needs lots of room and should be done outside with relatively calm winds.



**NOTE:** When the battery voltage is low (flashing LEDs) the flip function is disabled.

## LOW BATTERY INDICATOR

The LEDs on the Vista will flash slowly when the LiPo battery voltage is low. The Vista FPV should be landed as soon as possible to avoid damaging the battery. **Always unplug the battery after flight. The battery needs to be charged before the quadcopter is stored.**

The controller will make five quick beeps when the AAA batteries need to be charged.

## MOTOR OVERLOAD PROTECTION



The Vista is equipped with motor overload protection circuitry that shuts down the motors in the event the propellers become blocked by an obstruction and throttle is applied. In order to reset the overload protection you will need to free the Vista from the obstruction and lower the throttle to zero. If the overload protection is triggered repeatedly or late into a flight then it may prematurely cause the low battery indicator to flash the LEDs. Disconnect the battery and wait several seconds before reconnecting it. If the LEDs continue to flash then you should stop flying and recharge the battery.

## RECORDING VIDEO & PICTURES WITHOUT THE APP



1. Insert the memory card into the camera. If you remove or need to replace, insert as shown with the gold contact points facing up toward the Vista. Push the card in until it clicks into place. To release the card, push in until it clicks and the card will spring out of position to be removed. **The memory card should never be inserted or removed from the camera when the battery is plugged in.** When inserting the card, be sure to align the card correctly into the card slot.
2. Turn on the controller and connect the battery to the Vista. Before taking pictures or video you must allow the camera 30 seconds to initialize. Pictures or video taken before the camera has initialized may not be saved to the card or the file(s) will be corrupted.



3. Use the PICTURE and VIDEO buttons on the controller to take still images and video recordings. Pressing and releasing the VIDEO button will start video recording indicated by a long 'beep' from the controller. Pressing and releasing the button again will stop recording indicated by a short 'beep' from the controller and the LEDs on the Vista will flash. Pressing and releasing the PICTURE button on the controller will take a photo indicated by a short 'beep' from the controller. Photos can be taken using the PICTURE button on the controller even if the DroneView camera is recording video. Allow at least 2 seconds after taking a picture before taking another picture.

**NOTE:** Avoid pressing and holding the video and picture buttons. A quick 'press and release' is sufficient to activate the camera.



**BEFORE DISCONNECTING THE BATTERY FROM THE VISTA AND REMOVING THE MEMORY CARD, YOU MUST ALLOW AT LEAST 30 SECONDS FOR THE DRONEVIEW CAMERA TO CLOSE THE FILES. FAILURE TO DO SO MAY RESULT IN MISSING OR UNREADABLE FILES.**

4. Wait at least 30 seconds following the end of the last video recorded. Disconnect the battery from the Vista, THEN remove the memory card from the camera.
5. Insert the card into a memory card reader (not included) for use with a PC or tablet. Pictures are saved as .JPG files and videos are saved as .AVI files. Pictures and videos can be viewed or edited using software that was bundled with your PC or tablet, or there is a wide variety of software available from third parties both free and for purchase.

**NOTE:** The DroneView camera's maximum video length is 5 minutes. If video is recorded for longer than 5 minutes the DroneView camera will automatically close the video file and start a new file. There may be a short loss of video footage during this switch to a new file. The DroneView will continue to create new video files every 5 minutes of continuous recording until the memory card becomes full or the battery is disconnected or the battery voltage drops below the ability for the camera to operate. Corrupt or missing files may result in video recording being stopped in this way. When the battery voltage is low indicated by flashing LEDs the camera will stop recording and save the video file. Videos and pictures cannot be taken until the battery is recharged.

- After you have retrieved your files from the memory card (copy the files you wish to keep to a safe location) you can delete the files on the memory card. The DroneView camera will create the sub folders it needs if they are deleted from the card.

## USING THE DRONEVIEW APP

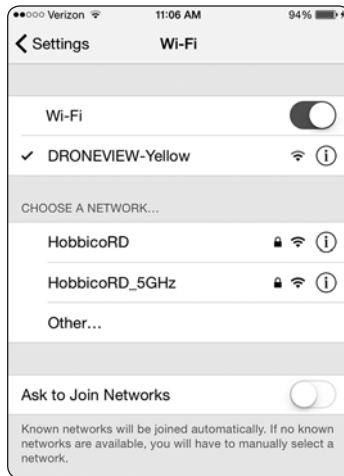
The DroneView app is software for your WiFi-capable Apple or Android device that allows you to connect to the DroneView camera to use the FPV (First Person View) function as well as to take videos and pictures and upload and view them directly to your device.



DRONEVIEW



- Install the "DroneView" app from Google Play (Android) or the App Store (Apple).
- Insert the memory card into the camera and connect a charged LiPo battery to the Vista.
- iOS Only** - Go to the WiFi setting options in your device and select the DroneView network. The actual name of the DroneView network will vary from the photo shown here. It may take several seconds for the DroneView network to appear in the available network list in proximity to your device. No password is needed to connect to the DroneView network. **NOTE:** Android devices will automatically connect to the DroneView WiFi network when the DroneView app is opened.

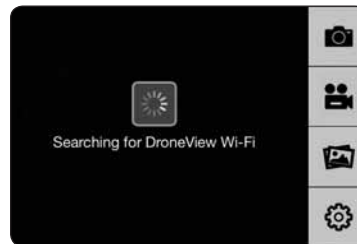


Apple and the Apple logo are trademarks of Apple Inc., registered in the U.S. and other countries. App Store is a service mark of Apple Inc. Android™ and Google Play are trademarks of Google Inc.

Wi-Fi® are Wi-Fi Alliance® are registered trademarks of the Wi-Fi Alliance.



- Grasp your device as shown and attach it to the phone mount on the controller by pushing up on your phone against the spring loaded top clip until you can fit the other side into the bottom clip.



- With your device connected to the DroneView WiFi network, open up the DroneView app. It may take several seconds for the app to locate and connect to the DroneView WiFi network.



- Once connected you will see on your device the image seen by the camera (referred to in this manual as the FPV feed). Press anywhere on the screen to pull up the main options.

**Picture Button** - Press to take a still image. Note: pictures cannot be taken with the app while recording is in progress.

**Video Button** - Press to start recording (red stop button appears on right when recording).

**File Gallery Button** - Opens gallery to display contents of memory card for viewing, exporting and deleting.

**Settings Button** - Opens the setting menu.

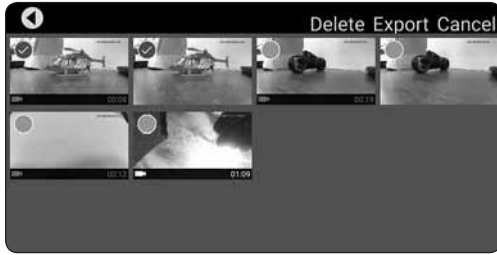
**NOTE:** The FPV feed is for the purposes of displaying what the camera is recording to improve the quality and accuracy of videos and pictures with respect to the pilot's intended field of view. We do not recommend attempting to fly the

Vista relying solely on the FPV feed. Delays in the FPV feed can cause the image shown in the app to not represent the exact current position of the Vista. Any interruption of the FPV feed will not be present in the recorded video files. Flying without maintaining line of sight of the quad is unsafe.

## FILE GALLERY



Opening the file gallery displays the contents of the memory card in the camera. Each thumbnail represents a picture or video. Videos have a small camera icon and the length of the videos on the thumbnails.



Pictures can be viewed by clicking on the picture thumbnails. In order to view videos, you must first export them by pressing **Select** and then pressing each thumbnail that you wish to export. Press **Export** to upload the files to your device. Pictures and videos will be copied to your device's camera roll. They can also be viewed in the DroneView app by pressing **Cancel** after the exporting is complete and then pressing the thumbnail you wish to view. (Android users do not need to press **Cancel** to view files.)

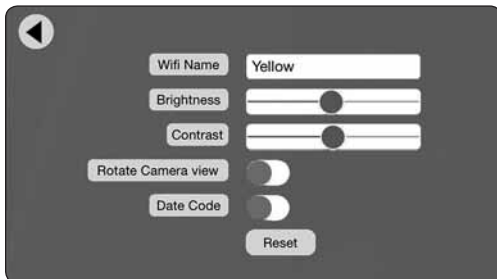
**NOTE:** We do not recommend exporting videos that exceed 1 minute in length because of the amount of time it will take to export the files. For longer videos or a larger quantity of videos, we recommend removing the memory card from the camera and transferring the contents directly to a PC using a card reader. If you do plan to export longer videos, we recommend first charging the Vista battery to ensure exporting does not become interrupted due to low battery voltage.

Press **Export** after you have selected the files you wish to export. A progress window will appear indicating the amount of data that has been exported.



When completed, you can now press the video thumbnails to view the videos or you can open your device's camera roll (gallery) and view them there. When you have confirmed that the files have been successfully transferred to your camera roll (gallery) press **Select** and choose the files you wish to delete if you no longer want them in the file gallery.

## SETTINGS



The settings menu allows you to change the WiFi name, adjust brightness and contrast, rotate camera view and toggle the date code off and on.

Changing the WiFi Name will change how the Camera is identified in the WiFi network list.

The Brightness and Contrast will adjust the FPV feed display qualities. Video and picture files will have the same display qualities as the FPV. You may wish to experiment with these settings depending on lighting conditions and personal preferences. Press reset to return the brightness and contrast to the default values.

Rotate Camera view will rotate the FPV feed and recorded videos and pictures 180°. This feature is needed when the DroneView camera is used independently of the Vista with a Power Battery Module (TACZ1002) and is mounted on top of a surface rather than underneath like on the Vista.

The Date Code will display the current date on the FPV feed when the Date Code is turned ON. The date will also be seen in video recordings and pictures in the same format as seen on the FPV feed. The Date Code is automatically updated to match the date of your device when connected via WiFi network.

If you made any changes in the settings menu then you will be prompted to save when exiting the settings menu. If you select NO when prompted to save then the changes will be discarded. **iOS Only** - If you change the WiFi name then you will need to exit the DroneView app and select the newly named network in the WiFi setting options of your device.

## USING TWO DEVICES SIMULTANEOUSLY

The DroneView camera can be connected with up to two devices simultaneously. Two devices will have the ability to connect to the DroneView WiFi network and share the FPV feed from the camera. Both devices will also be able to take pictures and start/stop video recording.

**NOTE:** Exporting can only be done with one device at a time. Attempting to export files simultaneously from a DroneView camera to two devices may cause the transfer to freeze.

## TROUBLESHOOTING

### FLYING PROBLEMS

**PROBLEM:** The Vista will not respond to the controller.

**SOLUTION:** (1) Charge or change the battery in the Vista. (2) Turn off the controller and disconnect the battery for the Vista. Re-link the Vista and controller.

**PROBLEM:** Red controller LED light flashing after linking.

**SOLUTION:** Replace with new AAA batteries.

**PROBLEM:** Unable to flip.

**SOLUTION:** Battery voltage too low.

**PROBLEM:** Stabilization not working properly.

**SOLUTION:** (1) Battery voltage low. (2) Re-link. (3) Recalibrate the sensors.

**PROBLEM:** Will not take off.

**SOLUTION:** Rotor blades incorrectly installed. See Blade Replacement section.

**PROBLEM:** Vista is shaking.

**SOLUTION:** Check the canopy, chassis, motors and rotor blades for damage.

**PROBLEM:** The USB charger LED blinks rapidly when attempting to charge the battery.

**SOLUTION:** The battery voltage is too low to charge. The battery voltage may recover on its own with time in order to be safely charged. Wait 1 hour and try charging again. If the charger LED still blinks rapidly then you may need to replace the battery.

### VIDEO PROBLEMS

**PROBLEM:** There are missing or corrupt files on the memory card.

**SOLUTION:** Refer to RECORDING VIDEO AND PICTURES WITHOUT THE APP for information regarding camera initialization and closing of files.

**SOLUTION:** The battery voltage may be getting too low for the camera to operate properly. When the low voltage LEDs blink, land the Vista and stop recording as soon as possible.

**SOLUTION:** Allow 2-3 seconds between taking pictures.

**PROBLEM:** The video button on the controller does not work or works intermittently.

**SOLUTION:** The video button must be pressed and quickly released. The controller will beep when the button works properly.

**SOLUTION:** The video button on the controller toggles between start/stop video. If using both the app and the video button to control video recording, you may need to press the video button a second time in some instances to get the correct start or stop command.

**PROBLEM:** The WiFi connection is lost during flight.

**SOLUTION:** There may be interference in the area. Try flying in a different location.

**SOLUTION:** You are exceeding the WiFi range of the DroneView camera. Maintain a closer proximity to your device during flight.

**PROBLEM:** The app does not re-establish connection after the connection has been lost.

**SOLUTION:** Close the DroneView app and remove it from the background tasks. Restart the DroneView app.

**PROBLEM:** Exporting files was interrupted and the export function cannot be restarted.

**SOLUTION:** Close the DroneView app and remove it from the background tasks. Restart the DroneView app. Run the export function again.

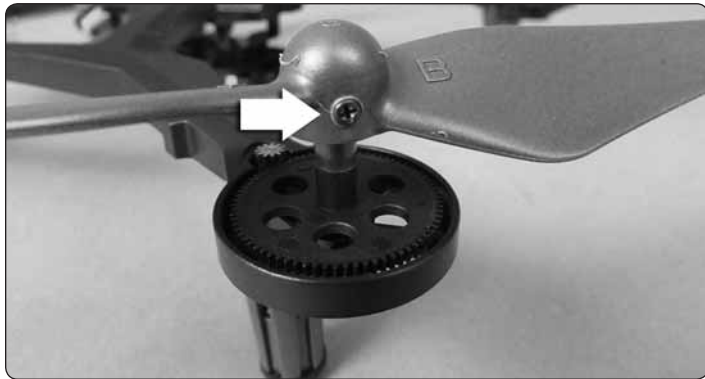
**PROBLEM:** You recorded videos/pictures but there are no files on the memory card.

**SOLUTION:** The memory card was incorrectly inserted into camera. Refer to RECORDING VIDEO AND PICTURES WITHOUT THE APP for instructions on the proper installation of the memory card.

**PROBLEM:** Horizontal scrolling lines appear in video or pictures.

**SOLUTION:** Avoid aiming the camera directly into the sun or reflected sunlight.

## BLADE REPLACEMENT



1. Remove the screw that secures the rotor blade to the gear shaft.
2. Pull the prop off the gear shaft.
3. Install the new rotor blade and secure it with the screw.

**NOTE:** The rotor blades have arrows that indicate which direction they rotate. Please refer to this diagram to verify that the correct replacement rotor blade is installed.



**FRONT**  
Color Blades  
Color LED Covers

**REAR**  
Black Blades  
Clear LED Covers

## PROP SHAFT REPLACEMENT

1. Remove the rotor blade from the prop shaft.
2. Push the shaft down to remove it from the gear.
3. Install the new gear shaft and rotor blade if it is not damaged.



**NOTE:** While the gear is out, check it carefully for any cracks or damage to the teeth.

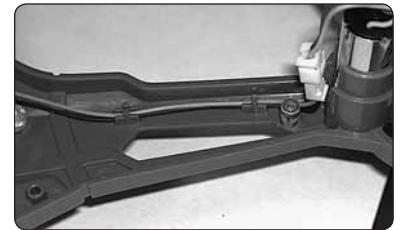
## MOTOR REPLACEMENT

1. Remove the screws securing the motor cover to the arm and pull the cover off the motor.



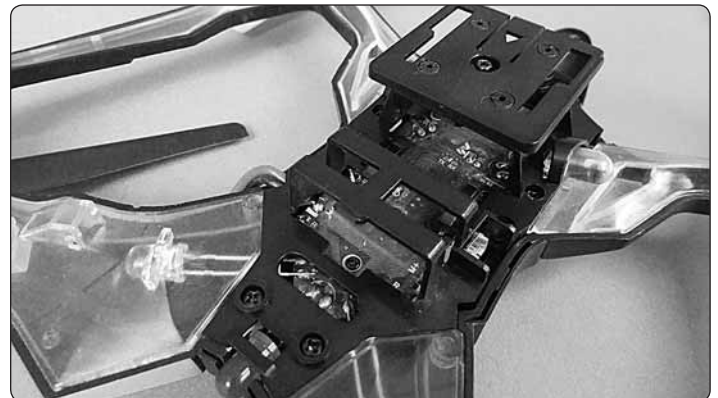
2. Use a small flat blade screwdriver to separate the motor plug from the socket. DO NOT pull the wires.

3. Remove the motor from the frame and insert the replacement. Make sure that the wire colors on the replacement motor are the same as the original. The motors for the clockwise props have black and white wires. The counter-clockwise props use motors with blue and red wires.



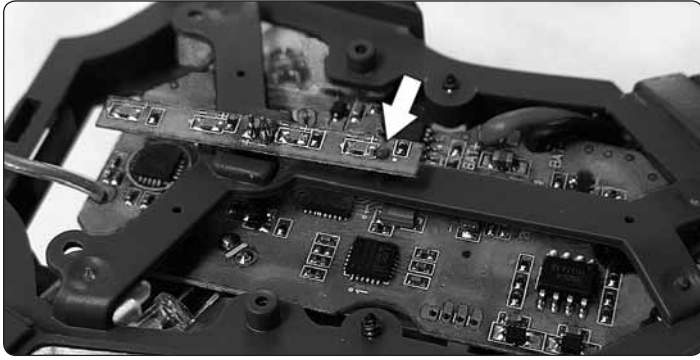
## FLIGHT CONTROL BOARD REPLACEMENT

1. Remove all four motor covers and the two screws in the section between the front and back arms.

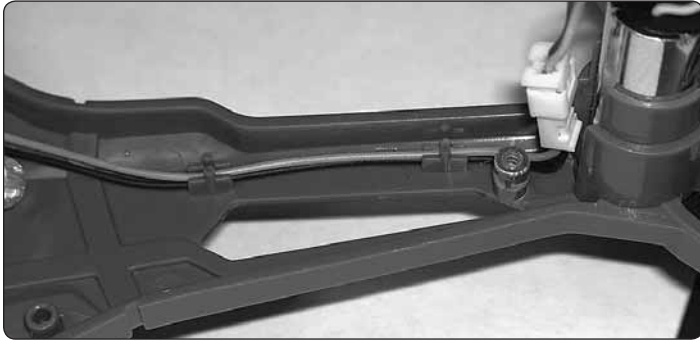


2. Remove the battery frame.
3. Remove the LED covers and unplug all four motors. Carefully pull the motor wires out of the frame.

4. Remove the two canopy screws and the canopy. Under the canopy is the canopy LED strip that must be unplugged from the control board.
5. Remove the 3 screws holding the control board and remove the board.



6. Install the canopy LED strip and the canopy. Be sure that the post is supporting the back of the LED strip.



7. Install the new control board and route the wires for motors. To prevent damage to the wires, route them between the guides on the inside of the arms.
8. Install the LED covers. Before tightening the screws, make sure the wires are positioned so they will not be damaged.
9. Replace the motor covers.
10. Calibrate the quadcopter sensors.

## BATTERY PRECAUTIONS

The Vista FPV uses a lithium polymer (LiPo) battery. Follow these precautions to ensure safe and trouble-free operation.

- ALWAYS disconnect the battery from the quadcopter when not in use.
- Only use the included charger with the flight battery.
- Do not attempt to use this charger with NiCd or NiMH battery packs.
- Do not attempt to use a damaged battery.
- This product contains a LiPo battery that must be recycled or disposed of properly.
- Do not leave the charger unattended while charging. Disconnect the battery and unplug the charger immediately if either becomes hot! However, it is normal for the charger to get warm.
- Disconnect the battery from the charger and carefully move the battery to a fireproof location if the battery begins to swell or smoke!
- Never allow the battery temperature to exceed 140° F [60° C].
- Do not attempt to charge a battery if it is swollen or hot.
- Do not place the charger or any battery on a flammable surface or near combustible materials while in use.
- Never disassemble or modify pack wiring in any way or puncture cells.
- Never charge inside a vehicle.
- Always disconnect the battery and remove the charger from the USB port when not in use.
- Land your model immediately when the LEDs flash to indicate that the battery power is low. Recharge the battery before attempting another flight. A dangerous situation can occur when attempting to recharge an over-discharged battery!
- ALWAYS keep a supply of sand accessible when charging. Dumping sand on the battery will extinguish a LiPo chemical fire.
- ALWAYS KEEP OUT OF REACH OF CHILDREN

## SAFETY PRECAUTIONS

Follow these safety precautions when operating this or any model quadcopter.

- Adult supervision required.
- Before flying, go to [www.knowbeforeyoufly.org](http://www.knowbeforeyoufly.org).
- Do not touch the spinning blades or fly over another person's head.
- Keep your face and body as well as all spectators away from the rotors whenever the battery is connected.
- Stay clear of buildings, trees and power lines. **AVOID** flying in or near crowded areas. **DO NOT** fly close to people, children or pets.
- Maintain a safe pilot-to-quadcopter distance while flying.
- Your Vista FPV quadcopter should not be considered a toy, but rather a small, working model. If not operated correctly, the model could possibly cause injury to you or spectators and damage to property.
- You must check the operation of the model before every flight to ensure that the model has remained structurally sound.
- Do not alter or modify the model, as doing so may result in an unsafe or unflyable model.
- Do your part in preserving the integrity of the FPV hobby. Know the boundaries of your flying area and **ALWAYS** respect the privacy of others.

## SLT COMPATIBILITY

The Vista has a receiver that is compatible with other SLT transmitters like the Tactic™ TTX650 or TTX850. A transmitter with an AnyLink can also be used provided it has the programming features in the following set up lists and at least 6 channels to control all the features of the Vista.

Here are setups for both the Tactic TTX650 and TTX850 transmitters. Other models using the AnyLink may use similar setups.

### Tactic TTX650

Model should be set up as AIRPLANE

SERVO SET: All channels set to NOR  
DUAL, EXPO: Not used  
CH5 AND CH6 SET:

INPUT: CH5	INPUT: CH6
CTRL: SC ( )	CTRL: SE ( )
OFFSET: +25%	OFFSET: +30%
TRAVEL: +50%    +75%	TRAVEL: +30%    0%

THROTTLE CURVE: Not used

THROTTLE CUT: Not used

AILERON MIXER: Not used

RUDDER MIXER: Not used

PROGRAMMABLE MIXER:

Mix1: CH6>CH6    SF<sub>OFF</sub>  
RATE L: -100%  
R: +100%  
OFFSET: +50%  
CTRL: SF<sub>OFF</sub>

**NOTE:** The Tactic TTX 650 transmitter is not capable of activating the DroneView camera. You will need to use the DroneView app to start and stop the camera. CH5 is used to control the 3-position dual rate switch which is set

at switch C on your transmitter. Unlike the Vista transmitter, this setup will allow you three different sensitivity rates. Adjust the offset and travel values of CH5 to suit your tastes for rate sensitivity. Switch F will make the Vista flip as described in the flipping section of this manual. Switch E turns the stabilization on and off. Position 0 and 1 are ON and position 2 is OFF.

### Tactic TTX850

Model should be set up as MULTICOPTER

Servo Set:

Reverse: CH6 REV

Dual Rate: Not used

Ch5-Ch8 Set: Not used

Throttle Curve: Not used

Throttle Cut: Not used

Throttle Hold: Not used

Advanced Gyro Gain:

Gyro X Axis	Gyro Y Axis	Gyro Z Axis
NORM: 0%	SP.0: -25%	SP.0: +0%
	SP.1: +25%	SP.1: -30%
	SP.2: +125%	SP.2: -30%
COUT.CH: -	OUT.CH: 5	OUT.CH: 6
CTRL: - - - -	CTRL: SC ( )	CTRL: SE ( )

Programmable Mixer:

MIX1: CH6 -> CH6    SF<sub>OFF</sub>

RATE L: -100%

R: +0%

OFFSET: +50%

CTRL: SF<sub>OFF</sub>

**NOTE:** The Tactic TTX 850 transmitter is not capable of activating the DroneView camera. You will need to use the DroneView app to start and stop the camera. CH5 is used to control the 3-position dual rate switch which is set at switch C on your transmitter. Unlike the Vista transmitter, this setup will allow you three different sensitivity rates. Adjust the Gyro Y Axis values to suit your tastes for rate sensitivity. CH6 operates both the flip function and the stabilization. Switch F will make the Vista flip as described in the flipping section of this manual. Switch E turns the stabilization on and off. Position 0 is ON and positions 1 and 2 are OFF.

## 90-DAY LIMITED WARRANTY

**PLEASE DO NOT RETURN YOUR PRODUCT TO THE STORE.** Dromida will repair or replace factory defects for 90 days from the date of purchase. This warranty specifically does not cover crash damage, misuse or abuse. To make a warranty claim, please contact our product support team at **1-217-398-8970 option 6** or e-mail us at [helihotline@greatplanes.com](mailto:helihotline@greatplanes.com). If requested by Product Support, please send defective product to:

### Hobby Services

3002 N Apollo Dr., Suite #1  
Champaign, IL 61822

In the European Union, send it postpaid and insured to:

**Service Abteilung Revell GmbH**  
Henschelstrasse 20-30  
32257 Bünde Germany

Tel: 01805-110111  
(nur für Deutschland)

E-mail: [Hobbico-Service@Revell.de](mailto:Hobbico-Service@Revell.de)

Please include a note about the problem, your contact information, and a copy of the receipt.

This warranty applies only if the product is operated in compliance with the instructions and warnings provided with each model. Dromida assumes no liability except for the exclusive remedy or repair of parts as specified above. Dromida shall not be liable for consequential or incidental damages. Some states do not allow the exclusion of consequential or incidental damages so the above exclusion may not apply to you. This warranty gives you specific legal rights and you may also have other rights which vary from state to state.



## FCC REQUIREMENT

This device complies with part 15 of the FCC rules. Operation is subject to the following two conditions.

- (1) This device may not cause harmful interference.
- (2) This device must accept any interference received, including interference that may cause undesired operation.

**NOTE: THE MANUFACTURER IS NOT RESPONSIBLE FOR ANY RADIO OR TV INTERFERENCE CAUSED BY UNAUTHORIZED MODIFICATIONS TO THIS EQUIPMENT. SUCH MODIFICATIONS COULD VOID THE USER'S AUTHORITY TO OPERATE THE EQUIPMENT.**

This equipment has been tested and found to comply with the limits for a Class B digital device, pursuant to Part 15 of the FCC Rules. These limits are designed to provide reasonable protection against harmful interference in a residential installation. This equipment generates, uses and can radiate radio frequency energy and, if not installed and used in accordance with the instructions, may cause harmful interference to radio communications. However, there is no guarantee that interference will not occur in a particular installation.

If this equipment does cause harmful interference to radio or television reception, which can be determined by turning the equipment off and on, the user is encouraged to try to correct the interference by one or more of the following measures:

- Reorient or relocate the receiving antenna.
- Increase the separation between the equipment and receiver.
- Connect the equipment into an outlet on a circuit different from that to which the receiver is connected.
- Consult the dealer or an experienced radio/TV technician for help.

This equipment must be installed and operated in accordance with provided instructions and the antenna(s) used for this transmitter must be installed to provide a separation distance of at least 20 cm from all persons and must not be co-located or operating in conjunction with any other antenna or transmitter. End-users and installers must be provided with antenna installation instructions and transmitter operating conditions for satisfying RF exposure compliance.

## CE COMPLIANCE INFORMATION FOR THE EUROPEAN UNION

### INSTRUCTIONS FOR DISPOSAL OF WASTE EQUIPMENT BY PRIVATE USERS IN THE EUROPEAN UNION:

This symbol on the product or its packaging indicates this product must not be disposed of with other household waste. Instead, it is the user's responsibility to dispose of their waste equipment by handing it over to a designated collection point for the recycling of waste electrical and electronic equipment. The separate collection and recycling of your waste equipment at the time of disposal will help to conserve natural resources and ensure that it is recycled in a manner that protects human health and the environment. For more information about where you can drop off your waste equipment for recycling, please contact your local city office, your household waste disposal service or location where you purchased the product.



### DECLARATION OF CONFORMITY:

Product: Dromida 2.4GHz 4-Channel Tx Rx      FCC ID: IYFMR100  
Item number: DIDJ1105 MR100  
Equipment class: 1

MR100 transmitter: The objects of the declaration described here are in conformity with the requirements of the specifications listed below, following the provisions of the European 2006/95/EC Low Voltage Directive:

**EN 60950-1:2006 Safety**

The objects of the declaration described here are in conformity with the requirements of the specifications listed below, following the provisions of the European R&TTE directive 1995/5/EC:

**EN300 328 V1.8.1.**

Technical requirements for radio equipment

**ETSI EN 301 489-1 V1.8.1, 301 489-17 V1.3.2 General EMC requirements for radio equipment**

**Hobbico, Inc.**

2904 Research Road  
Champaign, IL USA 61826



Distributed in Europe by Revell GmbH  
D-32257 Bünde Germany

The associated regulatory agencies of the following countries recognize the noted certifications to this product as authorized for sale and use.

UK	DE	DK	BG	SE	FI	GR
EE	LV	LT	PL	CZ	SK	HU
RO	SI	AT	IT	ES	PT	IE
NL	LU	MT	CY			

FCC ID: IYFMR100  
DROMIDA™  
IC:11104A-DRONEVIEW  
MADE IN CHINA



This device complies with Part 15 of the FCC Rules. Operation is subject to the following two conditions: (1) This device may not cause harmful interference, and (2) This device must accept any interference received, including interference that may cause undesired operation.

**STATEMENTS:** This device complies with Part 15 of the FCC Rules. Operation is subject to the following two conditions: (1) this device may not cause harmful interference, and (2) this device must accept any interference received, including interference that may cause undesired changes or modifications not expressly approved by the party responsible for compliance could void the user's authority to operate the equipment.

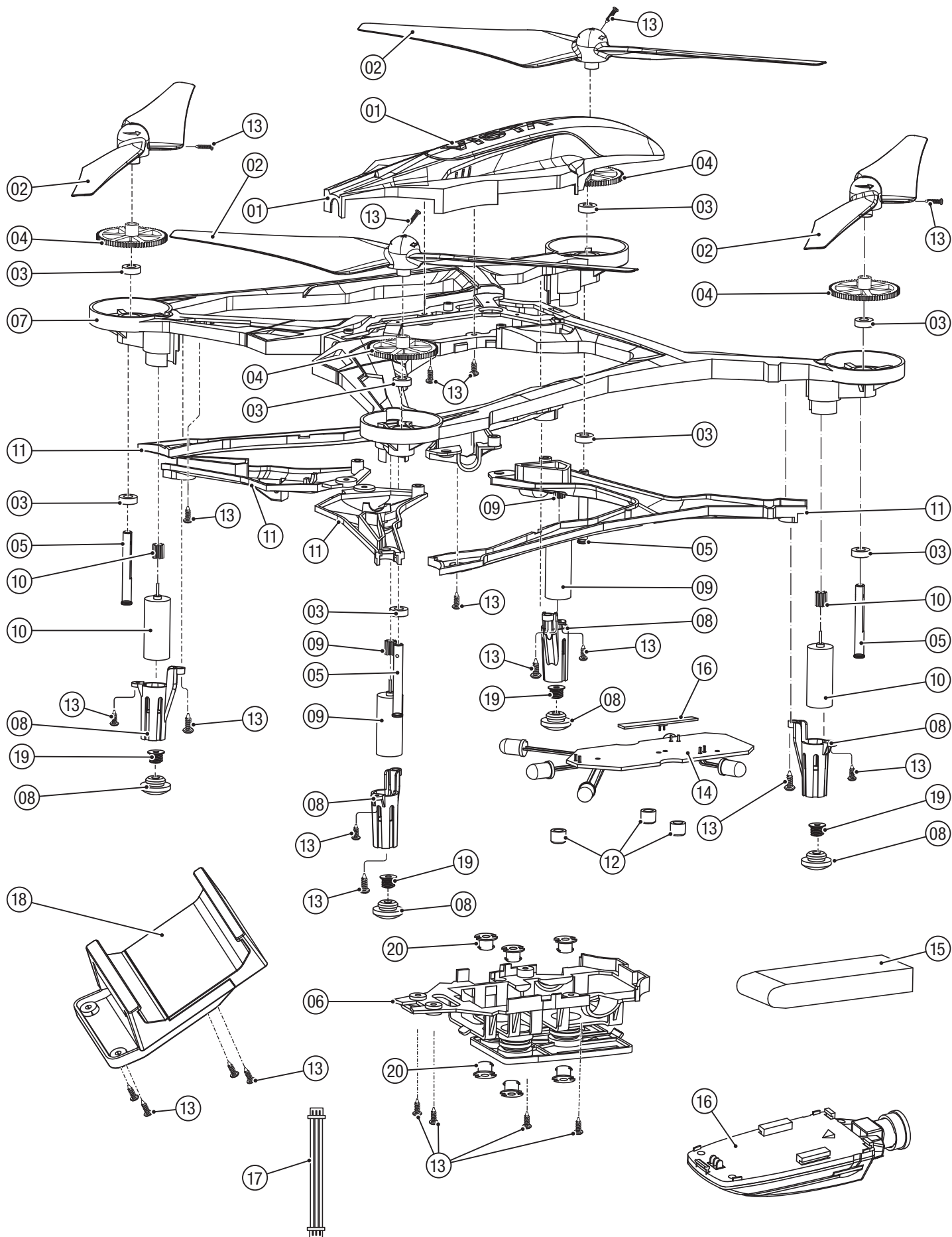
This equipment has been tested and found to comply with the limits for a Class B digital device, pursuant to Part 15 of the FCC Rules. These limits are designed to provide reasonable protection against harmful interference in a residential installation. This equipment generates, uses and can radiate radio frequency energy and, if not installed and used in accordance with the instructions, may cause harmful interference to radio communications. However, there is no guarantee that interference will not occur in a particular installation.

If this equipment does cause harmful interference to radio or television reception, which can be determined by turning the equipment off and on, the user is encouraged to try to correct the interference by one or more of the following measures:

- Reorient or relocate the receiving antenna.
- Increase the separation between the equipment and receiver.
- Connect the equipment into an outlet on a circuit different from that to which the receiver is connected.
- Consult the dealer or an experienced radio/TV technician for help.

## REPLACEMENT PARTS

1	DIDE1200	Canopy Green
1	DIDE1201	Canopy Blue
1	DIDE1202	Canopy Yellow
1	DIDE1203	Canopy Orange
2	DIDE1204	Prop Set Yellow/Black
2	DIDE1205	Prop Set Orange/Black
2	DIDE1171	Prop Set Blue/Black
2	DIDE1172	Prop Set Green/Black
3	DIDE1175	Bearing Set
4	DIDE1176	Gear Set
5	DIDE1177	Prop Shaft
6	DIDE1206	Battery Frame Camera Mount
7	DIDE1207	Main Frame Green
7	DIDE1208	Main Frame Blue
7	DIDE1209	Main Frame Yellow
7	DIDE1210	Main Frame Orange
8, 19	DIDE1211	Motor Covers
9	DIDE1218	Main Motor CW L/F, R/R
10	DIDE1219	Main Motor CCW R/F, L/R
11	DIDE1212	LED Arm Covers Yellow
11	DIDE1213	LED Arm Covers Orange
11	DIDE1183	LED Arm Covers Blue
11	DIDE1184	LED Arm Covers Green
12	DIDE1187	LED E-Board Dampers
13	DIDE1188	Screw Set
14	DIDM1214	E-board Yellow
14	DIDM1215	E-Board Orange
14	DIDM1110	E-Board Blue
14	DIDM1111	E-Board Green
15	DIDP1105	LiPo 850mAh 1S
16	TACZ1001	Tactic DroneView Camera Only
16	DIDE1189	Canopy LED Light Strip
17	DIDE1216	Camera Power Wire
18	DIDE1215	TX Mobile Phone Holder MR100
20	DIDE1217	ISO Camera mount Grommet Pins
	DIDP1121	USB Charger 1S LiPo
	DIDJ1105	Controller
	TACZ2010	4G Memory Card
	TACZ1000	Tactic DroneView w/battery module





**TO PREVENT MOTOR DAMAGE ALWAYS BE SURE THE THROTTLE IS OFF WHEN THE BLADES ARE OBSTRUCTED OR CONTROL IS LOST.**